

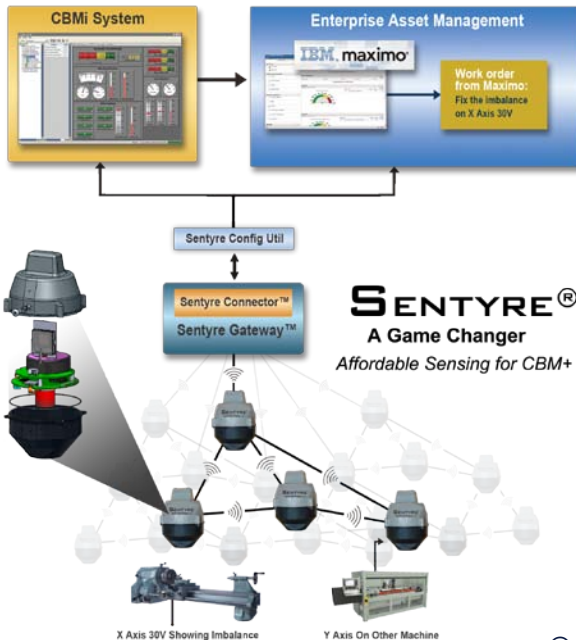
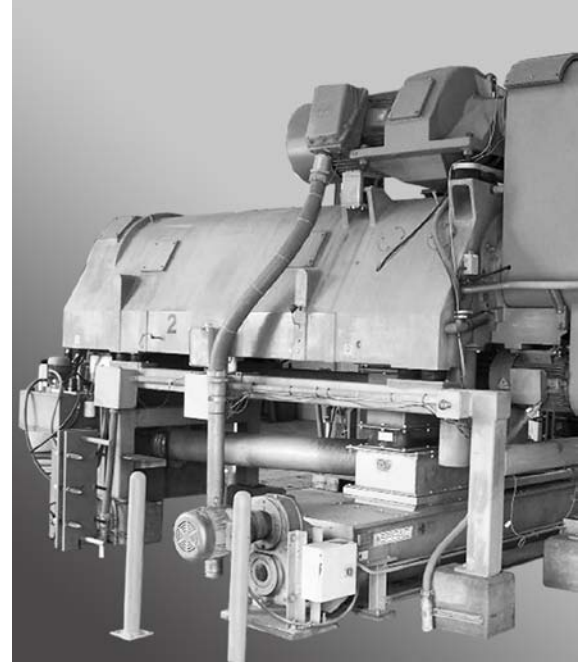
Wireless Portable Vibration Diagnostics

Finally a Diagnostic System that is EASY!!



Kit Contains:

- 4 Sentyre[®] Wireless Accel
- Pre-Configured Laptop
- Mesh Manager- All Accessories
- Getting Started Guide
- User Guide Expand to 250 nodes with CBMi Sentyre Six-Packs



Features:

- Wireless Mesh (802.15.4)
- Full vibration time series (allows for full analyses)
- 10 Hz – 8,000 Hz (+/- 3dB)
- 16 bit precision A/D
- Compact and self-contained
- Long battery life
- Standard 1/4-28 stud mount
- Custom storage and carrying case
- Flexible analysis plus easy to export to your software

impact-tek.com

© 2010, Impact Technologies, LLC

**Headquarters
New York Office**
200 Canal View Boulevard
Rochester, NY 14623
Phone: 585.424.1990
Fax: 585.424.1177

Pennsylvania Office
270 Walker Drive, Suite 200W
State College, PA 16801
Phone: 814.867.5122
Fax: 814.867.7550

Georgia Office
75 Fifth Street NW, Suite 312
Atlanta, GA 30308
Phone: 404.526.6188
Fax: 404.526.6189

CBMi SENTRYRE® - EZ Wireless Portable Vibration Diagnostic System

Using CBMi Sentyre the first time:

- Open the case
- Remove the laptop and start (username & password blank)
- Run CBMi Sentyre Software from the desktop shortcut
- Remove the mesh manager and install antenna
- Place within ~10m of any Sentyre mounting point and plug in power supply
- Remove Sentyres and activate
- Install Sentyres at desired monitoring points (maintain ~10m distance between nodes)
- View results!

Wireless Network Specs

- Operating freq 2.4000 – 2.4835 GHz
- Channels 15
- Modulation IEEE 802.15.4 DSSS
- Raw data rate 250 kbps
- Receiver sensitivity -90 dBm
- Output power 10 dBm
- Range* 100 m (indoors)

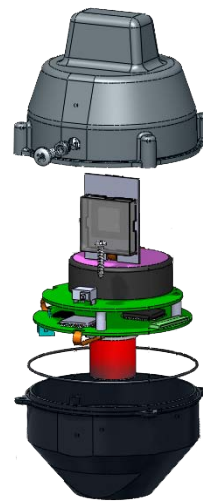
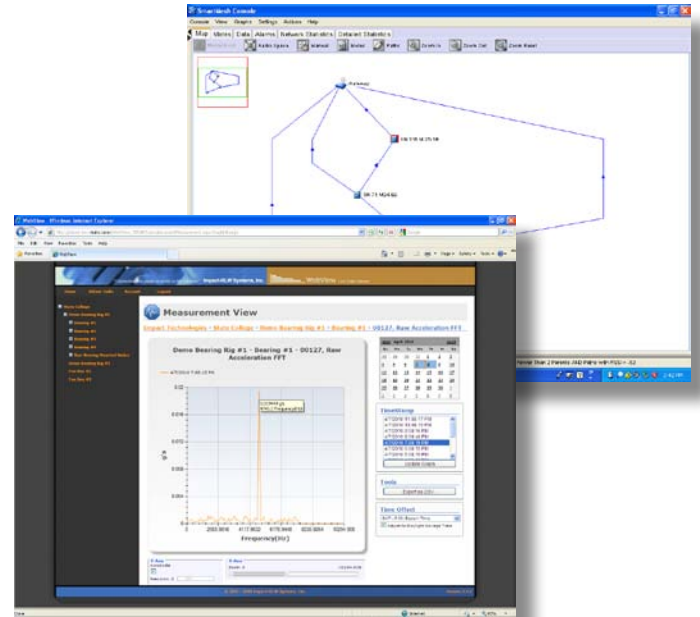
* Actual performance depends on installation

CBMi Sentyre Specs

- Operating temperature -40 - + 85C
- Sampling rates 1,875 - 30,000 Hz
- Waveform sample 2048 samples
- A/D Precision 16 bits effective
- Frequency response 10 – 8,000 Hz (+/-3dB)

CBMi WebView

- Vibration time series
- Spectrum and waterfall
- Network and node parameters



**From the Case
to the Factory Floor
in Minutes!**