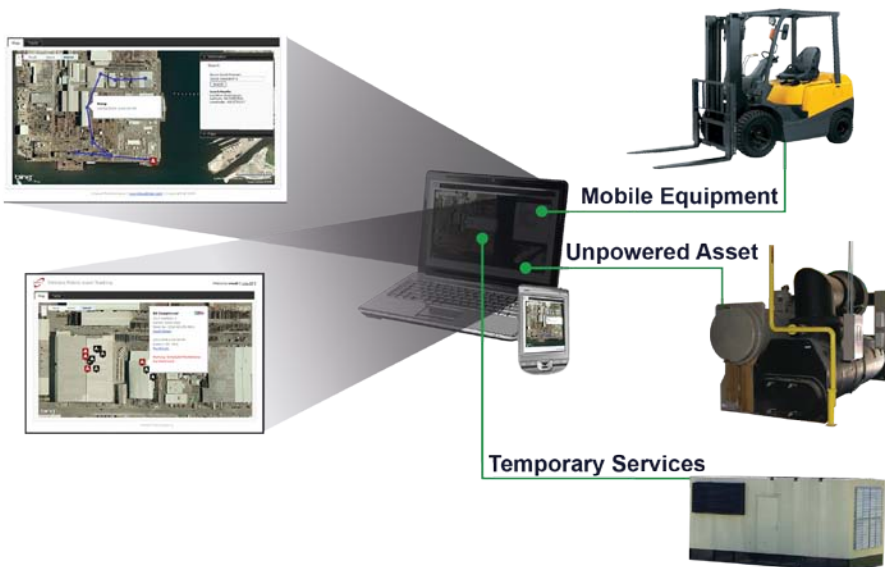


Secure Wireless Location and Condition Monitoring for Industrial Environments

Impact's DuraTrack® system offers a cost-effective end-to-end asset management solution for reducing operating and support (O&S) costs. This secure wireless technology provides remote location tracking and condition monitoring of high value assets, temporary services, and mobile equipment. The DuraTrack system is comprised of self-powered, low maintenance, wireless tags and a robust, web-enabled, software application.



Improved situational awareness and intelligent decision support capability such as:

- Asset location
- Environmental changes/events
- Production workflows
- Equipment usage
- Condition alerts/alarms
- Product quality assurance reporting
- Warranty validation

Features:

- FIPS 140-2 security encryption (DoD 8100.2)
- Rugged tracking tags (tested to MIL-STD-810)
- Comprehensive asset management
 - Remote monitoring - location, environment, usage
 - Auto event/alarm notification
 - Operations, logistics and maintenance planning
- Seamless indoor/outdoor tracking - cellular, WiFi, and GPS

impact-tek.com

© 2010, Impact Technologies, LLC

Headquarters New York Office

200 Canal View Boulevard
Rochester, NY 14623
Phone: 585.424.1990
Fax: 585.424.1177

Pennsylvania Office

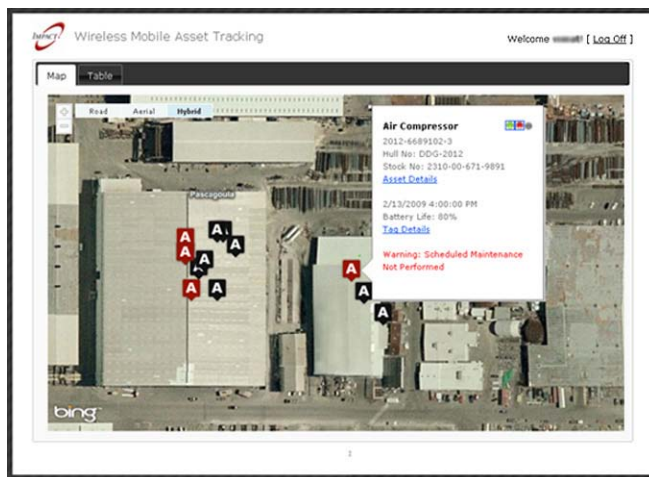
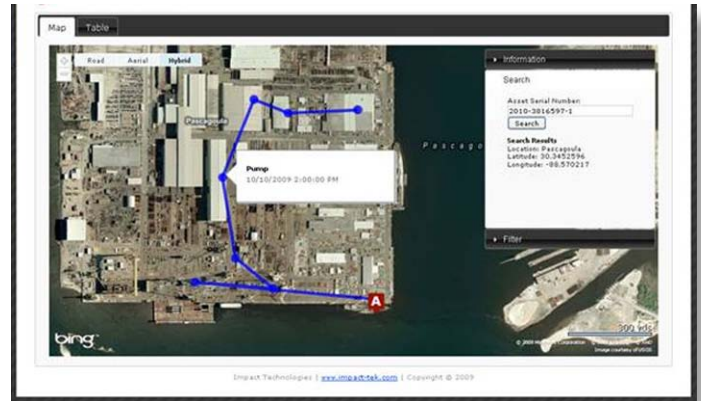
270 Walker Drive, Suite 200W
State College, PA 16801
Phone: 814.867.5122
Fax: 814.867.7550

Georgia Office

75 Fifth Street NW, Suite 312
Atlanta, GA 30308
Phone: 404.526.6188
Fax: 404.526.6189

Cost effective, scalable solution for changing business needs

- Shipyards, construction and repair centers, depots, manufacturing and process facilities, and logistics and supply chain organizations.
- Long operating life-tags automatically adjust to operating environment to achieve most power efficient combination of data acquisition and communication settings.
- Continuous visibility via standalone and mobile devices.
- Auto-messaging via IM, voice, text, email.
- Customizable rules for alarms and messaging.



Real-time notification of alarm conditions enables timely response to events that pose risk to equipment operation, production schedules or compromise the integrity of material assets.

- Automated Device-to-Asset association linking Enterprise and recorded DuraTrack data.
- Reduction in physical monitoring and human error.
- Documented event history for contractual and regulatory compliance.

“Advanced decision support tools enabling prediction of future maintenance needs based on recorded usage, PM schedule and sensed parameters”