

# IMS™

## Impact Maintenance Scheduler



*Reduce the total ownership cost for the future complex platform*

Impact Technologies has developed an advanced maintenance scheduler - Impact Maintenance Scheduler (IMS) - that can autonomously and optimally select and schedule maintenance actions for complex systems with multiple interrelated and interdependent equipment from a readiness and cost/benefit perspective. IMS utilizes relevant machinery health condition, remaining useful life and ERP databases (e.g., parts, personnel) information in order to determine the optimal maintenance actions to be performed at optimal times within the constraints of resources and mission requirements.

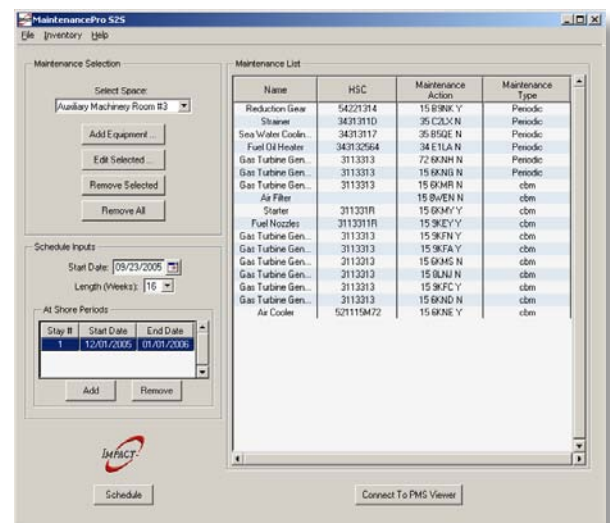
With the emphasis on system readiness and reducing the total ownership cost for the future complex platform, IMS has been implemented as a great solution to performing automated maintenance scheduling and resource optimization for Naval Ship Systems. IMS can be directly implemented to any complex system with interdependent equipment such as USAF, Navy, Army and other industrial systems.

A unique aspect of IMS is the ability to incorporate the health condition and remaining useful life information of interrelated-interdependent machinery systems as well as periodic maintenance and logistics information (available parts and personnel) to minimize the overall system risk. The benefits of performing maintenance tasks have been quantified in risk. As the ultimate goal is defined as maximizing readiness and/or minimizing cost, risk can be defined as either total ownership cost or expected down time.



## Features:

- Ability to incorporate health and remaining useful life information for scheduling
- Ability to evaluate the interdependencies of machinery in terms of maintenance
- Ability to minimize risk with optimum maintenance schedule
- Ability to identify the risk as readiness and cost
- The strength of mixed integer linear programming
- Software design with open system architecture (OSA)
- Ability to connect to existing enterprise resource planning system for logistic visibility



[impact-tek.com](http://impact-tek.com)

© 2010, Impact Technologies, LLC

### Headquarters New York Office

200 Canal View Boulevard  
Rochester, NY 14623  
Phone: 585.424.1990  
Fax: 585.424.1177

### Pennsylvania Office

270 Walker Drive, Suite 200W  
State College, PA 16801  
Phone: 814.867.5122  
Fax: 814.867.7550

### Georgia Office

75 Fifth Street NW, Suite 312  
Atlanta, GA 30308  
Phone: 404.526.6188  
Fax: 404.526.6189