

Radio Frequency/Digital Systems

IMPACT

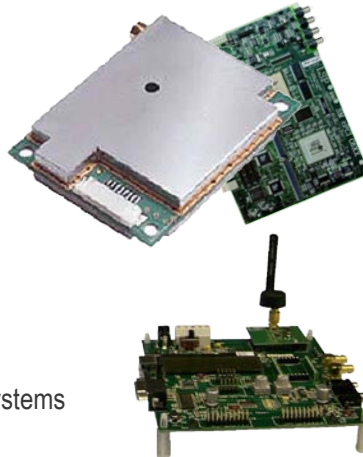
Reduces maintenance and lifecycle costs

Impact Technologies is developing a real-time diagnostic/prognostic technology for Radio Frequency/Digital (RF/D) Systems that assesses current operating conditions, anomalous events and establishes the foundation for a prediction of remaining useful life. This technology uses the available system or critical component level features to enable a self damage detection and health assessment capability.

The approach involves the identification of critical components, their failure effects on the system and the development of fault to failure progression models. Finally, diagnostic and prognostic features are fused intelligently to provide device health classification.

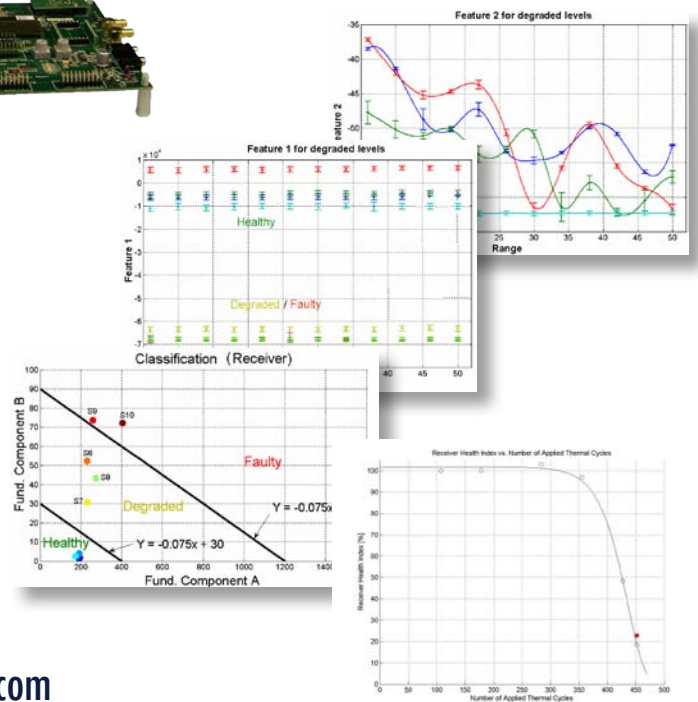
Features:

- Provides near real time, high confidence, health assessment
- Intelligent fusion of critical features for diagnostics
- Built-in diagnostic and prognostic capability
- Ability for online/offline integration into RF systems



Benefits:

- Minimizes or eliminates the need for additional sensors and data acquisition equipment
- Minimal software or hardware redesign to implement PHM for electronic systems
- Scalable to numerous electronic systems, operating in the RF spectrum such as GPS, Radars and SDR.
- Improves readiness and field reliability of military and civilian defense systems
- Reduces maintenance and lifecycle costs



impact-tek.com

© 2010, Impact Technologies, LLC

Headquarters New York Office

200 Canal View Boulevard
Rochester, NY 14623
Phone: 585.424.1990
Fax: 585.424.1177

Pennsylvania Office

270 Walker Drive, Suite 200W
State College, PA 16801
Phone: 814.867.5122
Fax: 814.867.7550

Georgia Office

75 Fifth Street NW, Suite 312
Atlanta, GA 30308
Phone: 404.526.6188
Fax: 404.526.6189