

Turbine Workscope Optimizer



Optimized Workscope leads to Reduced Costs

Engine maintenance costs accounts for a significant portion of the Total Ownership Cost of an aircraft fleet. Impact Technologies has developed an open architecture software application capable of reducing these costs by establishing visibility to the cost, reliability and performance effects of maintenance actions and prescribing an optimized work scope.

The software application can optimize the maintenance work scope given basic engine component status, configuration and age information to yield the most desirable maintenance actions that achieve a specified balance of objectives such as cost reduction, engine performance improvement and time on wing extension.

Developed for the following gas turbine engines, TF-39, T56, and F110, the tool offers expandability to other engines and applications.



Workscope Planning



Opportunistic Maintenance That will Reduce Cost and Increase Time in Operation

impact-tek.com

© 2010, Impact Technologies, LLC

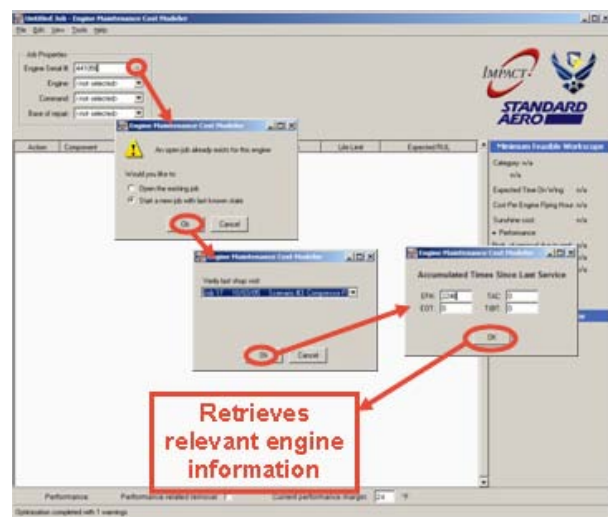
**Headquarters
New York Office**
200 Canal View Boulevard
Rochester, NY 14623
Phone: 585.424.1990
Fax: 585.424.1177

Pennsylvania Office
270 Walker Drive, Suite 200W
State College, PA 16801
Phone: 814.867.5122
Fax: 814.867.7550

Georgia Office
75 Fifth Street NW, Suite 312
Atlanta, GA 30308
Phone: 404.526.6188
Fax: 404.526.6189

Benefits:

- Guides a maintainer in developing an optimal work scope to correct primary failures on engines and identifies additional opportunistic actions that would reduce cost and increase availability by assessing components remaining useful life and performance characteristics.
- Efficiently optimizes maintenance work scope enabling the ability to conduct trade-off comparisons between Cost per engine flying hour and Engine time on Wing.
- Connects to customer's databases to quickly & efficiently import engine historical reliability indicators to streamline data entry.
- Supports scheduling of limited resources through identification of optimal overhaul work scope.
- Provides post maintenance performance and Cost per engine flying hour estimates in support of monitoring fleet health and ownership costs.



Features:

- "Save" feature and "Job Manager" to avoid inadvertent loss of job information.
- Secure multi-user Web-based architecture supporting customizable access rights.
- Produces estimates of Estimated Time On Wing and Cost Per Engine Flying Hour and Resulting Performance Metrics.
- Makes use of USAF engine maintenance and trending databases to construct and update engine reliability models and predict maintenance results.
- Incorporates a customizable optimization routine based on current build goals such as cost reduction, time on wing extension or engine performance enhancement.
- User defined constraints, can specify component as "Do Not Overhaul" or "Exclude".
- Allows consideration of configuration upgrades

