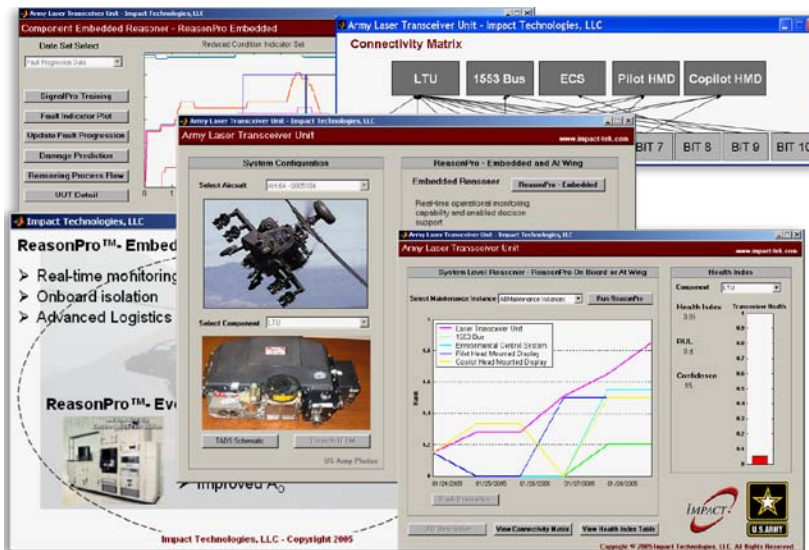


## Significant life cycle support cost reduction

Impact Technologies, Electronic Systems PHM group, develops failure prediction technologies for electronic systems. With demonstrated success in Power Electronics, Radio Frequency, Digital, and Motor/Generator domains, Impact's array of technologies is customizable to diverse application domains. Building on a suite of diagnostic reasoning software for improved fault isolation, and incorporating advanced, physics-based, dynamic failure modeling with signal and usage monitoring, permits Impact to rapidly develop and deploy PHM systems connecting operational, maintenance, and logistics elements to provide effective condition-based maintenance solutions for avionics, vetronics, and power electronics.



Incorporating dynamic physics of failure modeling with advanced usage and signal monitoring, Impact provides robust, real-time solutions for e-PHM.

## Features:

- PHM coverage for Power, RF, Digital, and Analog devices
- Dynamic physics of failure modeling provide high-confidence predictions
- Practical condition and usage monitoring
- Minimal instrumentation enabled through enhanced system data reuse
- Automated reasoning enhances BIT and diagnostics
- Actionable information for maintenance, logistics, and mission planning

[impact-tek.com](http://impact-tek.com)

© 2010, Impact Technologies, LLC

**Headquarters  
New York Office**  
200 Canal View Boulevard  
Rochester, NY 14623  
Phone: 585.424.1990  
Fax: 585.424.1177

**Pennsylvania Office**  
270 Walker Drive, Suite 200W  
State College, PA 16801  
Phone: 814.867.5122  
Fax: 814.867.7550

**Georgia Office**  
75 Fifth Street NW, Suite 312  
Atlanta, GA 30308  
Phone: 404.526.6188  
Fax: 404.526.6189

## Benefits:

- Advanced logistics triggering
- Improved maintenance planning
- Reduction in Can Not Duplicate and No Fault Found (CND, NFF)
- Significant life cycle support cost reduction

